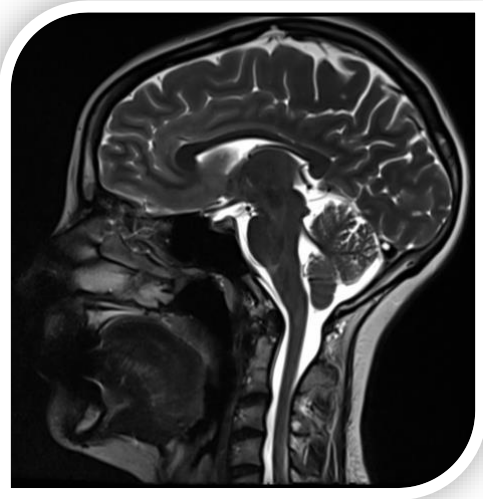


# WE NEED YOU!

## Participants Needed for Type 1 Chiari Malformation Research Study



Above: An example of an MRI scan.

I am interested in learning more about this study. Please contact me with additional information.

---

Print Name

---

Date

---

Email

---

(   )

---

Phone

Please feel free to contact us with any additional questions.

Research Coordinator at  
The University of Idaho:

[brynm@uidaho.edu](mailto:brynm@uidaho.edu) or call:

(208)-885-1578



Above: A patient receiving an MRI scan.



JOHNS HOPKINS  
MEDICINE

## Research participants needed!

My name is Dr. Bryn Martin, and my laboratory is conducting an NIH-sponsored research study to better understand Chiari malformation. You are receiving this flyer because we need research participants for this study.

### In specific, we need the following participants:

1. **Asymptomatic Chiari:** Adult people that have incidental MRI findings of greater than 6 mm tonsillar descent below the foramen magnum, but are **NOT** considered “true” Chiari patients
2. **Healthy control:** Adult healthy people that do not have a neurological disease.

As a participant in our study, you will be required to have MRI obtained at **Johns Hopkins Medical Center in Baltimore, Maryland.**

You will also need to fill out several study forms.

If you complete the entire study, **you will be paid \$250 for your participation.**

### Contact

Please contact me by email, [brynm@uidaho.edu](mailto:brynm@uidaho.edu), if you are interested to learn more about your potential participation in our research.

## Benefit to Chiari patients

The findings from our study are aimed to provide a new MRI tool to help improve Chiari patient diagnosis.

**We greatly appreciate your consideration to participate!**

Sincerely,

Bryn A. Martin, Ph.D.  
[brynm@uidaho.edu](mailto:brynm@uidaho.edu)

Associate Professor  
Dept. of Biological Engineering  
University of Idaho  
Moscow, ID